


SIGNATURE

NORTH EAST

OFFICIALLY RATED THE NO.1 ESTATE AGENT IN THE NORTH EAST





 Chirton West View, North Shields NE29 0EN

Chirton West View, North Shields NE29 0EN

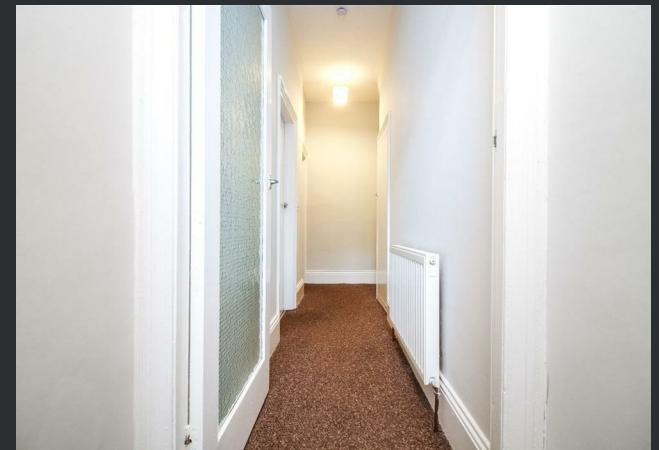
Asking Price £99,950

Signature North East welcomes you to this beautifully presented two-bedroom apartment, perfectly situated in the popular area of North Shields. With its prime location, this home is ideal for a variety of buyers. The surrounding area offers a fantastic range of amenities including independent shops, popular pubs, cosy cafés, and well-regarded restaurants. You'll also find nearby green spaces for leisurely strolls, and the historic North Shields Fish Quay with its vibrant atmosphere and scenic riverside views. Coastal access is just moments away, making this a superb base for enjoying all that the North East has to offer.

Upon entering the property, you are greeted by a central hallway leading to a spacious and inviting living room, an ideal space for both relaxing and entertaining. The room is filled with natural light thanks to a large window, creating a bright and airy atmosphere. Flowing seamlessly from the living space is the stylish and well-equipped kitchen, boasting an array of bright wall and base units complemented by sleek worktops. From the kitchen, you can access the bathroom, which features a bathtub with overhead shower, hand basin, and WC.

Continuing through the apartment, you'll find two well-proportioned double bedrooms, each offering generous space and flexibility. Both bedrooms comfortably accommodate double beds along with additional furnishings. The neutral décor and excellent layout provide a blank canvas ready for personalisation.

Externally, the property enjoys a generous rear yard, offering a private outdoor area ideal for relaxing, entertaining, or enjoying a morning coffee. There's plenty of space for garden furniture, potted plants, or even a barbecue setup, making it a true extension of the living space. Additionally, on-street parking is available, providing convenience for residents and visitors alike. This apartment combines comfort, style, and location, making it a must-see opportunity in the heart of North Shields.



PLEASE NOTE THAT THE VENDOR HAS CERTIFIED THE PROPERTY INFORMATION AND IMAGES.

PROPERTY FLOORPLAN



Total area: approx. 63.8 sq. metres (686.9 sq. feet)

Measurements:


Living Room
16'4" x 11'11"

Kitchen
10'0" x 6'10"

Bathroom
6'11" x 5'7"

Bedroom One
14'6" x 12'2"

Bedroom Two
12'8" x 6'10"

Energy Efficiency Rating		
	Current	Potential
Very energy efficient - lower running costs		
(92 plus) A		
(81-91) B		
(69-80) C	70	77
(55-68) D		
(39-54) E		
(21-38) F		
(1-20) G		
Not energy efficient - higher running costs		
England & Wales		EU Directive 2002/91/EC 





More 5 Star Customer Reviews than any other Agent based in the North East on allAgents.co.uk



SALES

LETTINGS

FINANCE

LAW

WE COVER THE WHOLE OF THE NORTH EAST

Whitley Bay
0191 251 3344

Cramlington
01670 897 213

Tynemouth
0191 296 6689

Morpeth
01670 513 966

Ponteland
01661 820 082

Wallsend
0191 432 4151

Alnwick
01665 511 800

Heaton
0191 432 4275

Forest Hall
0191 266 9966

Other locations
0191 640 3523

Newcastle
0191 640 2284

Durham
0191 303 8252

Gosforth
0191 640 3523

Sunderland
0191 543 6390

Whickham
0191 432 5102

Gateshead
0191 432 4294

Jesmond
0191 281 1037

Killingworth
0191 640 3602

Ryton
0191 413 9845

Head Office &
Lettings
0191 253 4815

*Highest recommended 5-star reviews than any other Estate Agent based in the North East on allAgents.co.uk - The UK's Largest Customer Review Website for the Property Industry & Awarded Best Estate Agency 2018 & 2019 - North East England by SME News